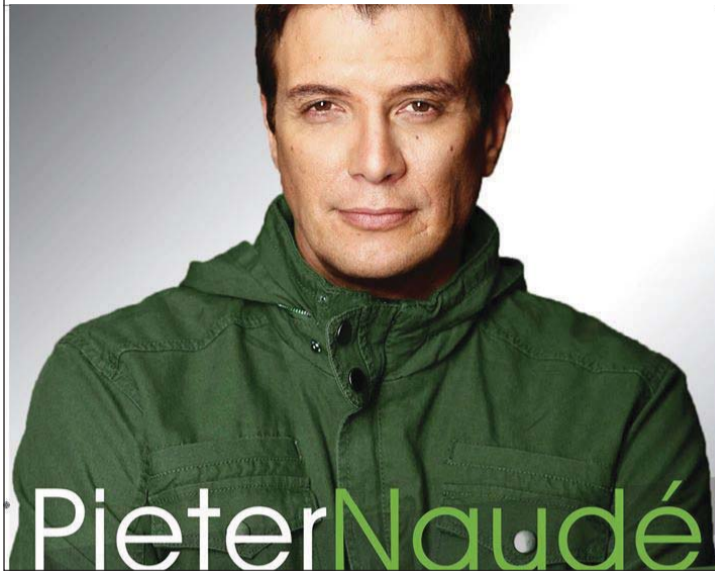




Rustenburg – Come and enjoy monster truck rides, mud and tyre obstacles and loads of prizes to be won at the 4x4 Fun Day on Saturday, 3 February from 07h00 – 17h00 at Steineck Lodge, Dinie Estate Road, Kroondal. A cash bar, food stalls and a jumping castle for the young ones will be available. Entry is R20 pp for spectators, and the entry fee for 4x4 entrants are R200. For more information please contact Jacques on 083-520 5768.

Pieter Naudé se Valentynsdans

Rustenburg – Bespreek vandag jou kaartjies na Pieter Naudé se Valentynsdans op Vrydag, 9 Februarie. Die makietie vind plaas van die WA van Zyl-saal. Kaartjies beloop slegs R80 per persoon. Vir enige navrae en/of besprekings, kontak Zelda Vermeulen by 083-248 8504.



New teachers at Bergsig Academy



Rustenburg – Bergsig Academy is proud to announce their new teachers for the year. Front from left: S. Bezuidenhout; C. Buys; C. Willemse; and R. Lubbe. Back from left: A. Jordaan; J. Janse van Rensburg; T. Faul; J. Voigt; P. Kgasoane; and M. Marais

2018, here we come!



Rustenburg – Herewith new staff that joined Grenville High School this year. From left: M. Snyman, H. Hattingh and C. Harmse.

Back to school safety tips

When parents talk about school safety these days, they're usually referring to the surge of violence at schools.

TRAUMA RESCUE'S 15 TIPS FOR 2018

1. Plan a walking/ cycling route to school or the bus stop: Choose the most direct way with the fewest street crossings and, if possible, with intersections that have crossing guards.
2. Walk/ cycle the route with your child beforehand: Teach your kid(s) to stay away from parks, vacant lots, fields and other places where there aren't many people around.
3. Strangers: Teach your child never to talk to strangers or accept rides or gifts from strangers.
4. Don't walk alone: Be sure your child walks to and from school with a sibling, friend or neighbour.
5. Obey traffic signals: Teach your kids – whether walking, biking or riding the bus to school – to obey all traffic signals, signs and traffic officers. Remind them to be extra careful in bad weather.
6. As close to the school as possible: When driving kids, deliver and pick them up as close to the school as possible.
7. Bike helmets: If your child bikes to school, make sure he/she wears a helmet that meets safety standards. Research indicates that a helmet can reduce the risk of head injury by up to 85%.
8. Scooters: If your child rides a scooter to school, make sure he/she wears sturdy shoes, a helmet, kneepads and elbow pads.
9. Busses & blind spots: Teach children to arrive at the bus stop early, to stay off the streets, wait for the bus to come to a complete stop before approaching the street, watch for cars and avoid the bus driver's blind spot.
10. Stay seated: Remind your children to always stay seated and keep their heads and arms inside the bus or car while riding.
11. Can the bus driver see you? Teach your child not to bend down in front of a bus or car to tie shoes or pick up objects, as the driver may not see him/her before starting to move.
12. What's your parents telephone numbers? Be sure that your child knows his or her home phone number and address, your work number, the number of another trusted adult and how to call 0861 789 911 for emergencies. Save this number on your phone. Write it down on your child's school bag under ambulance.
13. Check the playground equipment at your child's school: Look for hazards such as rusted or broken equipment and dangerous surfaces. Report any hazards to the school.
14. Avoid any drawstrings on the hood or around the neck of jackets and sweatshirts: Drawstrings at the waist or bottom of jackets should extend no more than 80cm to prevent catching in car and school bus doors or getting caught on playground equipment.
15. Give your child some strategies for coping with bullies: Your child should not give in to a bully's demands, but should simply walk away or tell the bully to stop. If the bullying continues, talk to a teacher to assist.



0861 789 911

Work with leaders in your field every day.

Glencore is one of the world's largest global diversified natural resource companies. Our global network comprises more than 90 offices located in over 50 countries, plus we have over 150 mining and metallurgical sites, offshore oil production assets, farms and agricultural facilities.

We employ approximately 160 000 people and it's these people that we value above all else. They are our greatest asset.

Our strategy is to maintain and build upon our position as a leading integrated producer and marketer of commodities worldwide.

Join us and let's grow together.

HUMAN RESOURCES MANAGER

Wonderkop Smelter, Rustenburg Area, North West

Ref. No. WKPHRM001

The position calls for an energetic, well-presented, enthusiastic and reliable self-starter.

Requirements: • A B degree/diploma in Human Resource Management plus an Advance Diploma in Labour Relations • 10 years' experience in human resources management and preferably in a mining/smeltering environment • Computer literacy (MS Office, e-mail and Internet) and report-writing.

Duties: The HR Manager will focus on providing leadership in the implementation and upholding of fundamental human resource practices. These principles align with the strategic intent of the business to grow through its people. Responsibilities include: • Offering advice and guidance to employees, supervisors and Management regarding HR, IR and HRD-related matters • Serving as a link between Management and employees • Advising managers on legal requirements, such as employment equity, the Labour Relations Act, basic conditions of employment and skills development • Ensuring adherence to and effective implementation of company policies and procedures • Ensuring the implementation of fundamental HR practices such as recruitment, training and development, developing job specifications/profiles, performance management and succession planning • Promoting sound employee relations and consultation with unions • Managing all administrative functions • Analysing the performance of the Human Resource function and initiating continuous improvement initiatives in line with best practices • Compiling information and reports related to projects and programmes of the HR Department.

Selection procedure: • Panel interview • Possible psychometric assessment • Candidates may be subjected to reference checking.

In making the final selection, consideration will be given, but not limited to, achieving employment equity objectives.

Forward applications, including a comprehensive CV and quoting the relevant reference number, to Wonderkop Smelter HR Office, Private Bag X82325, Rustenburg 0300 or e-mail:

Belinda.smit@glencore.co.za or fax: (014) 572-0003.

Closing date: 29 January 2018

By submitting your CV to Glencore, you hereby give us permission to circulate your information to the interview panel members for this vacancy only. Your information will not be used for any other position/purpose and will be disregarded after an offer has been made.

Please be advised that only applicants meeting the stated minimum requirements will be responded to and, if you have not received communication within 21 days from closure of the advertisement, please regard your application as being unsuccessful.

apply now

www.glencore.com/careers

DIVERSIFIED • DEDICATED • DRIVEN

GLENCORE